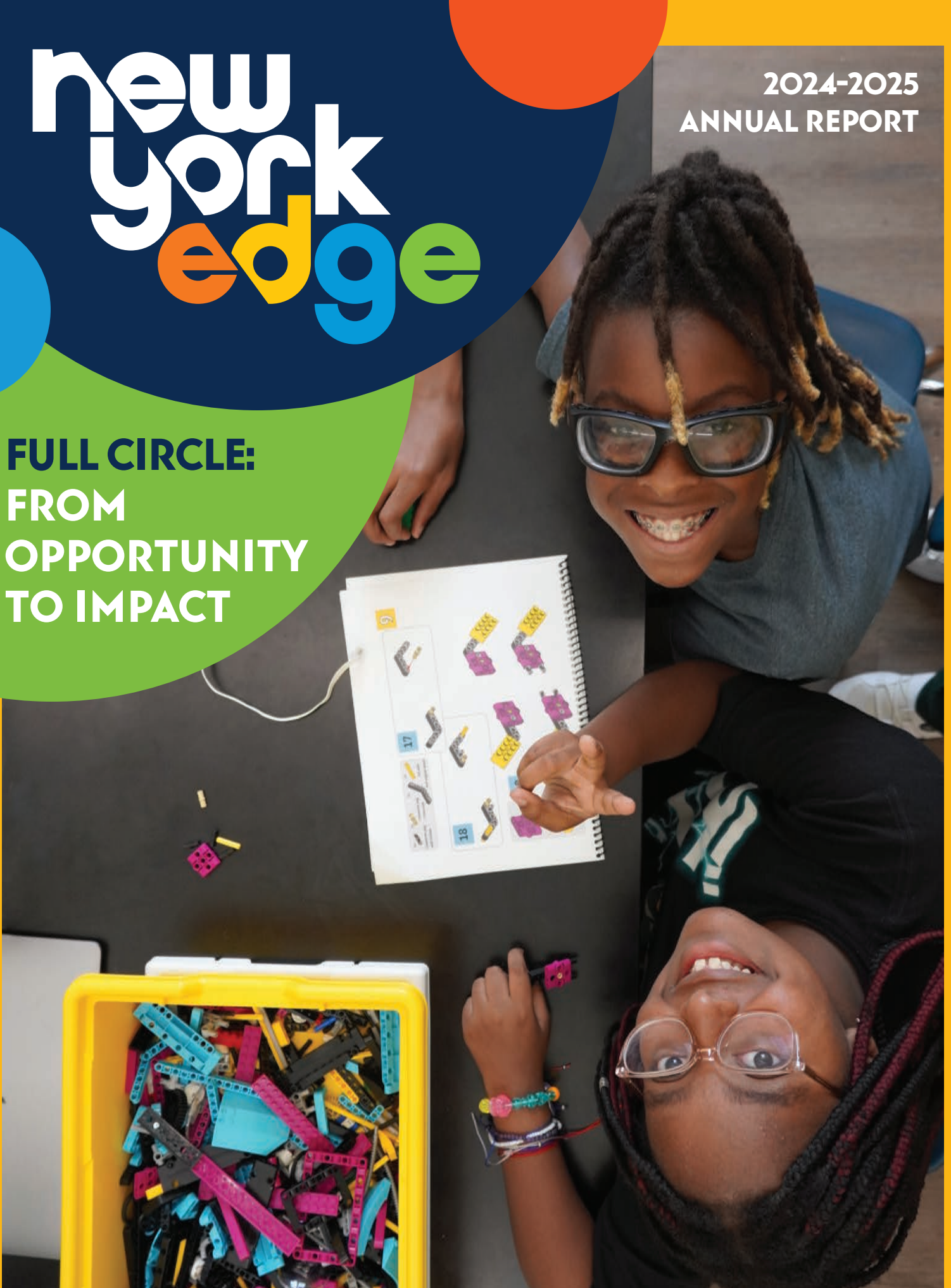


new york edge

2024-2025
ANNUAL REPORT

**FULL CIRCLE:
FROM
OPPORTUNITY
TO IMPACT**



BOARD OF DIRECTORS

Francis Greenburger
Chairman

Jeff Ravetz
Vice Chair

Ross Sandler
Chairman Emeritus

David Alcaly

Roger Alcaly

Craig Balsam

Stuart Bruck

Moira Casey

Monica Chaves

Louis C. Ciliberti

Seema Dhar

Niko Elmaleh

Robert Fagenson

Niesha N. Foster

Marilu Galvez

Anita Gupta

Pascale Hainline

Howard Helene

Miki Kagan

Javier Lattanzio

Peter Lieb

Jim O'Neill

Greg Reimers

Rashid Silvera

Elizabeth Tam
Young Professionals
Council Representative

Robert Tuchman

Marisa Beharry-Vanzie
Parent Representative

Gregory Weiss



LETTER FROM CEO



DEAR NEW YORK EDGE COMMUNITY,

As we close out another remarkable year, I want to reflect on the impact New York Edge continues to have on young people across our city and touch on why our work has never been more essential. Young people today face unprecedented academic, social, and emotional challenges. Many students have a deep need for safe spaces to explore their talents, receive guidance, and develop the confidence they need to thrive. The opportunities we provide are not optional; they are vital. Donors like you make it possible for us to reach tens of thousands of students with programs that open doors and help young people build bright futures.

What makes New York Edge extraordinary is not only the number of students we serve, 35,000 from kindergarten through 12th grade, but the lasting impact our work has on each child. Across schools in New York City and on Long Island, we provide opportunities that bring together academics, social emotional learning, wellness, athletics, the arts, and enrichment. Through these experiences, students explore new interests, build resilience, and develop skills that extend far beyond the classroom. Along the way, they gain confidence, step into leadership roles, and learn to contribute meaningfully to their communities.

Many of our graduates return as staff, volunteers, and members of the Young Professionals Council, passing on the lessons they learned and inspiring the next generation. This cycle of growth and support is made possible by donors who invest in young people and believe in their potential.

In the pages that follow, you will see highlights from across the year—moments that reflect the creativity, determination, and talent of the students we serve. **Your generosity makes these opportunities possible, helping young people build skills, confidence, and a sense of purpose.**

At a time when many students face growing pressure and uncertainty, New York Edge provides stability, encouragement, and pathways to the future. Together, we are expanding what afterschool programs and community school partnerships can offer students, families, and communities.

With appreciation and ambition,

Rachael Gazdick
Chief Executive Officer

FROM THE COURT TO THE STAGE TO THE CHESS BOARD, OUR STUDENTS SPENT THIS YEAR DEVELOPING THEIR RESILIENCE, LEADERSHIP ABILITY, AND SKILLS.

MS 127X KNICKS HOOP BUS/PEP RALLY!



THE MS 127X GIRLS AND BOYS TEAMS ARE THE REIGNING DIVISION CHAMPIONS FOLLOWING MAY'S NEW YORK EDGE BASKETBALL TOURNAMENT.

The win reflects the discipline and teamwork students develop through New York Edge programs.

These student athletes had the opportunity to participate in a clinic hosted by the Garden of Dreams Foundation and led by Knicks alum John Wallace. More than 100 students received professional coaching through stations focused on hands-on basketball skills. Participants also experienced the Knicks Hoop bus, a collaboration with Hoopbus, a national nonprofit bringing basketball to schools, neighborhoods, and community events to make sports accessible to youth. Simran Ahmed, an 8th grader from the MS 127X Knights, earned top honors in the clinic's knockout contest and received two tickets to Knicks game 5 against the Pacers, which she attended with her coach, Edwin Pasual.

Through the season, tournament, and clinic, students not only improved their game on the court, but developed leadership and teamwork skills they will carry with them in their athletic careers and beyond. New York Edge continues to form new community partnerships that give students access to high-level experiences like this one.

2025 SPRING GALA

We had an incredible evening at Gotham Hall celebrating three New York Edge Champion for Kids Awardees: Christopher V. Albanese and Russell C. Albanese, President and Chairman, Albanese Organization, Inc.; Eric Andersen, Senior Advisor, Aon; and Marilu Galvez, President and General Manager, ABC7/WABC-TV. Each of these individuals and organizations has been indispensable to New York Edge over the past year, and we were overjoyed to celebrate them alongside our volunteers, donors, partners, and everyone else who makes our mission possible. A highlight of the event was seeing our students perform alongside Broadway stars from Wicked. The evening reflected the full circle of New York Edge's work; bringing together supporters, mentors, and students whose lives have been shaped by these programs.



Particularly poignant was honoree Eric Andersen's remark:

"IT'S EASY TO PRETEND YOU CARE BUT IMPOSSIBLE TO FAKE YOUR PRESENCE."



We are grateful to the supporters whose generosity continues to expand opportunities for New York Edge students.

Your support levels the playing field for the students we serve, creating the next generation of leaders.



MIDDLE SCHOOL BASKETBALL CHAMPIONSHIPS AT BARCLAYS CENTER

On April 7th, we raised our annual Basketball League Championships to the next level by hosting the event at the Barclays Center, home of the Brooklyn Nets and New York Liberty. More than 600 students, families, and supporters gathered to celebrate the achievements of our young athletes.

Highlights included three championship matchups, an elementary all-star game, and high-energy halftime performances by New York Edge's cheer and step teams. Winners received trophies, banners, and medals recognizing their dedication and teamwork.

CHAMPIONSHIP WINNERS:

- Middle School JV: 238Q
- Middle School Varsity: 127X
- Girls L.E.A.D Championship: 127X



LEGIONS OF HOPE - CELEBRATING MLK DAY

Each year, on MLK Day, volunteers around the city mobilize to transform this day off into a "day on", using the federal holiday to focus on service. Community members came together for this year's MLK Day of Service to make a meaningful impact at schools citywide and to honor Martin Luther King Jr.'s legacy by giving back to their city. Projects included:

SCHOOL BEAUTIFICATION: Students and volunteers co-designed and painted murals celebrating community, diversity, and service – plus vibrant panels for school safety desks to make welcoming first impressions.

SELF-CARE KIT MAKING: At bustling sewing stations, volunteers and students assembled care kits for families in their communities, combining craftsmanship with compassion.



OUR STUDENTS STEPPED IT UP!

Student teams presented routines developed through months of practice at New York Edge's 9th Annual Step Competition on March 22, showcasing discipline, teamwork, and creativity. Twelve schools came together to compete, cheer one another on, and bring their routines to life. The energy was electric as each team demonstrated remarkable resilience, determination, and talent, along with true sportsmanship.

Presented by the New York Edge in collaboration with Step Afrika!, the 2025 Annual Step Competition titled Bounce Back & Step Up!, offered students the chance to compete for a once-in-a-lifetime opportunity with Step Afrika!, alongside highly interactive workshops that prepared teams throughout the season. The competition highlighted the creativity and commitment of students across the city.

Congratulations to our first-place winners, 61K: New Dawn Mecca!

EVENTS LIKE THIS GIVE STUDENTS THE OPPORTUNITY TO PERFORM, COLLABORATE, AND GROW AND THESE EXPERIENCES OFTEN INSPIRE THEM TO RETURN AS MENTORS AND LEADERS FOR THE NEXT GENERATION.

SONGWRITERS CIRCLE

Our annual **Songwriters Circle** brought this year's theme of Resilience to life through powerful music and moving performances. Students shared original songs that captured their strength, stories, and hopes for the future. Students used music to explore the theme and share personal stories through songwriting. **For many students, creative programs like this become the starting point for lifelong artistic and leadership journeys.** Craig Balsam, co-founder of KIDZ BOP and veteran producer, was the competition's keynote speaker.





CHECKMATE! NEW YORK EDGE AT THE SUPER NATIONAL CHESS CHAMPIONSHIP

New York Edge's **IS 318K chess team** traveled to Orlando, Florida this past May to compete in the Super National Chess Championship, one of the largest scholastic tournaments in the country. Widely recognized as the most decorated middle school chess program in the nation, IS 318 has spent the past decade dominating competitions including Super Nationals, National Scholastic Championships, and Junior High Nationals. The program, featured in the acclaimed 2012 documentary Brooklyn Castle, demonstrates how investment in youth programs creates lasting opportunity.

This year, the team added three more national titles to its remarkable record. Over three days of competition against more than 4,000 players, IS 318 captured first place in

THROUGH PROGRAMS LIKE CHESS, THE CIRCLE OF IMPACT CONTINUES AS EACH GENERATION OF STUDENTS INSPIRES THE NEXT.

the Under 1700, Under 900, and Adult 1700 sections. These victories reflect the power of strong support systems that allow students to learn, compete, and excel.

Leading the charge were seventh graders Hillel and Julian, who earned co-champion honors in the Under 1700 section. Their success reflects both individual dedication and the mentorship and teamwork that define the program.

"These championships build upon our program's historic success," said Assistant Principal John Galvin. "Hillel and Julian's co-championship reflects their dedication and the collaborative environment we've built at IS 318."

SPECIAL OLYMPICS UNIFIED CHAMPION BANNER



On Tuesday, May 14, 2025, **City-As-School** will be recognized at the Chancellor's Office for its designation as a **Special Olympics Unified Champion School**—a distinction that reflects a deep, sustained commitment to creating an inclusive school climate.

As part of this recognition, City-As-School was presented with the **Unified Champion Banner**, making it the first program in New York City honored with this designation. As the largest school district in the country, New York sets the standard of accessibility in scholastic sports nationwide, and City-As-School is leading it into an era of greater inclusivity.

Through every program, from sports to arts, chess to filmmaking, New York Edge students continue to benefit from a cycle of support, mentorship, and opportunity made possible by donors. Each achievement, performance, and championship reflects the growth, resilience, and leadership fostered in a nurturing environment, and demonstrates the transformative impact of programs that serve the whole child to truly change lives.

BEHIND EVERY STUDENT SUCCESS STORY IS A NETWORK OF MENTORS, VOLUNTEERS, AND PROGRAMMING DESIGNED TO SUPPORT THEIR GROWTH.

STUDENT VOICES AT THE STATE CAPITOL

On February 26th, students from six Community Schools traveled to Albany, NY, to participate in Community Schools Advocacy Day. In conversation with local and state officials, they shared personal experiences, advocated for essential resources, and gained a hands-on understanding of the legislative process. **This empowering event reinforced, for both the legislators and students, the importance of youth voices in shaping policy and driving change in their communities.** New York Edge has partnered with Community Schools—an initiative devoted to advancing equity in the New York City school system—for more than a decade.

GIRLS LEAD CIRCLE

EMPOWERING GIRLS TO LEAD WITH CONFIDENCE IN EVERY ARENA



Girls LEAD (Learning Empowerment through Athletic Development) is a year-round program that helps middle school girls build self-assurance through sports, mentorship, wellness, and career exploration. Through clinics, competitions, and leadership activities, participants gain teamwork, resilience, and leadership skills while learning from women in their communities. Girls are encouraged to find their voice, take up space, and envision themselves as leaders in school, sports, and future careers.

The Circle connects donors, mentors, and supporters with students, creating opportunities that allow girls to succeed and give back. With this support, New York Edge can expand the program by creating all-girls teams, connecting participants with mentors, and providing equipment, uniforms, and inclusive spaces.

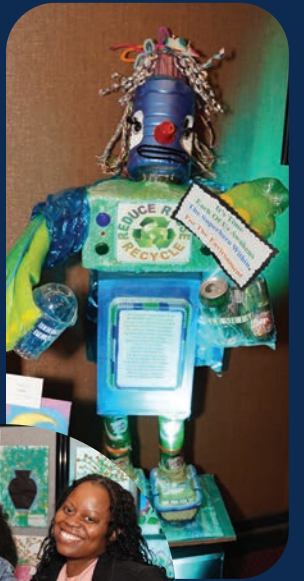
AS GIRLS GROW AND SHARE THEIR EXPERIENCES, THEY RETURN TO INSPIRE AND GUIDE THE NEXT GENERATION, CONTINUING A CYCLE OF IMPACT THAT DONORS MAKE POSSIBLE.

GET INVOLVED

Support Girls LEAD by volunteering as a mentor, hosting a Speed Mentoring or career event, leading a donation drive, or making a gift to support a Girls LEAD team for a full year. To learn more and to join the circle, visit newyorkedge.org/girlslead.

14TH ANNUAL SPRING ARTS SHOWCASE

The **Skirball Center for the Performing Arts** once again hosted our spectacular student showcase event! FOX5 NY's Tina Cervasio emceed the evening, which featured performances from students across our visual and performing arts programs, as well as a stunning selection of artwork from across the five boroughs. **Over 30 sites participated in performances and art submissions!**



SPORTS MENTORING

This year, we launched Sports Mentoring, an extension of our speed mentoring program that pairs students with current and former college athletes. Our Sports and Wellness team encourages participation in athletics to promote health, self-esteem, and teamwork. Sports Mentoring connects students with mentors who have pursued athletic paths while showing them the possibilities of a future in sports. **By learning from athletes who have followed similar paths, students begin to see how opportunity can come full circle through mentorship and leadership.**

At mentoring events, students rotate through short sessions to learn about athletic pathways, discipline, and resilience, followed by skills clinics led by volunteers. Our first events featured the St. John's University Cheerleading Team at CS 178 in Brooklyn and the Stony Brook University Women's Basketball Team at Lafrancis Hardiman School in Wyandanch, Long Island.

READ ACROSS NEW YORK EDGE

On March 1st, we launched our second annual **Read Across New York Edge Week** with a reading and student-author panel at the historic Strand Bookstore. The celebration showcased new and upcoming titles from our **Student Book Publishing** program, through which students from multiple New York Edge sites have collaborated with award-winning authors and illustrators to write and publish their own books. With guidance from authors, students explored storytelling, world-building, and creative expression, publishing their own works and sharing their voices with peers across the city.



OVER THE FOLLOWING WEEK, MORE THAN 40 CHILDREN'S BOOK AUTHORS VISITED SCHOOLS ACROSS THE CITY, BRINGING STORIES AND A CONTAGIOUS LOVE OF READING AND WRITING TO OUR CLASSROOMS.



COLLEGE AND CAREER READINESS HIGHLIGHTS



WITH A FOUNDATION OF STRONG PROGRAMS AND COMMUNITY SUPPORT, OUR STUDENTS ARE STEPPING INTO THEIR FUTURES.

The New York Edge program at **TAPCO HS** has successfully launched its internship component, offering 41 students hands-on experience in various professional fields. Students were matched with local businesses aligned with their career interests, ensuring valuable skill development. Prior to placement, they completed assessments and necessary documentation for readiness. Our Family Development and College & Career Readiness Coaches continue to provide ongoing support through regular check-ins. Although this program is in early stages, student and coach feedback have reflected definite increases in preparedness.

We're also excited to announce a new partnership with **NYC Charter High School**

for Computer Engineering and Innovation (AECI2) in the Bronx. Through the Learn & Earn and NDA grants, we'll support 103 students in grades 9-12 in navigating career exploration, academic support, college application assistance, work-readiness training, and leadership development. Eligible students will have opportunities for paid internships during the school year and summer. This collaboration aims to equip students with the skills for post-secondary success while strengthening community engagement and workforce preparedness.

Beyond internships and academic preparation, our students are also learning to use their voices to shape policy and advocate for their communities.

GET REEL FILM FEST



At the 3rd Annual Get Reel Film Festival, students shared 12 short-form works—Instagram reels, documentaries, dance videos, and animated title cards—showcasing creativity, leadership, and resilience. Family, friends, and community members gathered at the Museum of the Moving Image to celebrate their achievements. Nine student filmmakers gave us a peek into their creative process in a powerful talkback. They took the audience through the creation of their projects, the joy they got to access through storytelling, and the challenges faced along the way. **Experiences like the Get Reel Film Festival help students discover their voices and creative paths—skills many continue developing in college, careers, and future mentorship roles.**



BIG PICTURE LEARNING

New York Edge and our **Community School team at Community School for Social Justice** were featured in Big Picture Learning's (BPL) newsletter. BPL is one of our main partners at the Community School for Social Justice, who supports us with professional development and technical assistance in our college and career access programming.

Their work in centering student voices in education and building a national network of supported schools is invaluable, in our community and beyond. They highlighted our internship program, career panel, college trips, podcast, PBIS store, and more. This partnership continues to expand access to career-connected learning.

AN EXCERPT FROM THEIR NEWSLETTER

CSSJ's internship program and student-interest driven offerings have experienced exponential growth over the past school year. They've increased both the number of interns in their program, as well as their community partnerships, including an exciting partnership with TD Bank. Students have gone on their farthest overnight college trip to date, visiting UConn, VA State and Hampton U. In addition, the team put together a successful career panel with six presenters. They've made major gains with their school store and CSSJ bucks program, which has bolstered students' real world learning around financial literacy. In the last year they've added a student-created mural to their walls, aired a student-led podcast episode between student (Jacob) and financial expert at Deloitte (Roger Arrieux), and offered boxing classes to students.

VOLUNTEER WITH US

MAKE A DIFFERENCE IN THE LIVES OF NEW YORK CITY STUDENTS.

Volunteers are essential to New York Edge. By sharing their time and expertise, they help students build belief in themselves, explore opportunities, and envision bright futures. Whether through mentoring, literacy, the arts, or wellness, every contribution matters. Many volunteers are inspired by experiences like the ones New York Edge provides today.

Opportunities can fit any schedule, from one-time activities to ongoing support. Volunteers inspire students and help them grow into leaders who return to guide others. Donors make this cycle possible, enabling programs that empower young people and strengthen communities for generations to come.



LinkedIn hosted a dynamic speed mentoring event.



Coding Club for elementary school students at PS 78, in action through our partnership with Morgan Stanley.

WAYS TO GET INVOLVED

SPEED MENTORING

Engage middle school students in fast-paced, high-impact conversations about high school, college, careers, and life beyond the classroom. Through rotating mini-mentoring sessions, volunteers share personal journeys, offer guidance, and help students see what's possible. Not only will you be providing insight to these students, you'll have the opportunity to get to know some of the phenomenal youth that drive New York Edge's work.

EVENT VOLUNTEER OPPORTUNITIES

Support students by volunteering at signature New York Edge events across arts, sports, and wellness. Opportunities include our annual Step Competition (March), Spring Arts Showcase (June), and fundraising events throughout the year. These events allow us to encourage, award, and rally around our students. Your support helps create memorable experiences that celebrate young talent, teamwork, and achievement.

YOUNG PROFESSIONALS COUNCIL (YPC)

Join a community of mission-driven New Yorkers in their 20s and 30s committed to expanding opportunity for youth. YPC members participate in networking, volunteering, fundraising, and advocacy, while gaining exposure to nonprofit leadership and building skills for future board service.

Learn more and sign up to volunteer at newyorkedge.org/volunteer

A YEAR OF SERVICE IN NUMBERS

\$260,000+ WORTH OF IN-KIND GOODS DONATED, INCLUDING BOOKS, HYGIENE KITS, FOOD, BACKPACKS, SCHOOL SUPPLIES, TOYS AND MORE

1,300+ BACKPACKS WITH SCHOOL SUPPLIES DISTRIBUTED TO STUDENTS

70+ VOLUNTEER EVENTS, INCLUDING SKILLS WORKSHOPS, PACKING EVENTS, CAREER PANELS AND SPEED MENTORING EVENTS WITH DELOITTE, MORGAN STANLEY, M&T BANK AND MORE

3,600+ STUDENTS REACHED

\$41,000+ IN CONTRIBUTED TIME BY VOLUNTEERS
BASED ON VALUE OF VOLUNTEER TIME PER HOUR IN NEW YORK STATE (\$34.59)

1,100+ HOURS OF VOLUNTEERING **409** VOLUNTEERS

VOLUNTEER SPOTLIGHT

“ Seeing a post asking for help at Art Day immediately brought back the memories of my life in Rhode Island. As a drawing instructor at RISD Pre-College and designer of toy packaging for Hasbro, a great deal of my time was dedicated to considering the needs and desires of children. I knew no matter the task how rewarding this opportunity would be, yet the result was completely beyond anything I imagined. It’s inspiring and joyful to help install the student art showcase at NYU. ”

- ALIONA KATZ

THE IMPACT CONTINUES

At New York Edge, every opportunity has the power to spark something lasting in a young person. Through our programs, students build a sense of possibility, discover their strengths, and begin to see the many ways they can shape their futures. With the support of our donors and community, these experiences bring out the very best in our students. Some carry those lessons into professional paths in other fields, while others return to New York Edge as mentors, volunteers, and leaders. In this way, each student’s growth becomes part of something larger, strengthening the community that helped them succeed and ensuring the next generation has the same chance to thrive.



“ I want students to see themselves in roles they could never imagine. I hope I can inspire them. ”

- DIANA, COMMUNICATIONS PROFESSIONAL



“ They gave me the motivation, the inspiration and the tools I needed to to prove myself. It was very inspiring to be in that space. ”

- EBONY, ACCOUNT EXECUTIVE AT MARINO PR



“ Afterschool programs help you find your voice. I was a very shy kid, but New York Edge helped me find my friends, my interests, and my passions. ”

- JULIAN, SPORTS LEAGUES MANAGER AT NEW YORK EDGE



“ I hope that if the kids can walk away with just one thing - a passion, an interest, a hobby - that’s how we know we’ve done our job. ”

- JUAN, ADMINISTRATIVE ASSISTANT AT NEW YORK EDGE

CORPORATE VOLUNTEER PARTNERS



COMMUNITY PARTNERS



DONOR SPOTLIGHT: Q&A WITH ADAM YOCKEY



ADAM YOCKEY IS PROJECT DIRECTOR, GLOBAL PROGRAMS AT THE INTERNATIONAL YOUTH FOUNDATION, WHERE HE LEADS GLOBAL INITIATIVES CONNECTING YOUNG PEOPLE TO CREATIVE LEARNING OPPORTUNITIES THAT BUILD CRITICAL SKILLS, AND IS A VALUED SUPPORTER OF NEW YORK EDGE.

WHAT ABOUT NEW YORK EDGE'S WORK FIRST RESONATED WITH YOU ON A PERSONAL LEVEL AND PROMPTED YOU TO GET INVOLVED?

When I first visited the website and saw New York Edge's holistic approach to supporting young people and its firm commitment to providing both high-quality academic support and fun, engaging, creative programs for young people in under-resourced communities, I knew they would be a great partner to engage.

CAN YOU SHARE A SPECIFIC MOMENT OR EXPERIENCE THAT LATER CONFIRMED YOU'D MADE THE RIGHT DECISION TO SUPPORT NEW YORK EDGE?

A moment that stands out for me was meeting an 8th-grade student in the Music Production Academy at Ronald Edmonds MS113, and he introduced himself and said he was a "creator." His confidence in his abilities and the skills he had learned in creating and producing his own music was inspiring to see.

FROM YOUR PERSPECTIVE AS A GLOBAL YOUTH DEVELOPMENT LEADER, WHAT DISTINGUISHES NEW YORK EDGE'S APPROACH TO SERVING STUDENTS IN NEW YORK CITY?

New York Edge's commitment to providing an array of activities that not only engage young people but equip them with skills for future success distinguishes them in their approach.

They are always considering new ideas and partnerships, whether it's a hydroponics garden club or partnering their Music Production Academies with Roc Nation for students to gain real life experience, New York Edge goes above and beyond for young people.

IN YOUR EXPERIENCE, WHAT'S AN ASPECT OF YOUTH PROGRAMMING THAT'S OFTEN MISUNDERSTOOD OR OVERSIMPLIFIED, AND HOW DO YOU SEE NEW YORK EDGE ADDRESSING THAT REALITY EFFECTIVELY?

To many people afterschool or extended learning programs may just seem like homework and fun activities, but these programs provide young people with so much more. Youth build connections with peers and caring adult mentors, discover their voice and passions through trying numerous activities, and develop skills like problem-solving, self-confidence, and critical thinking that will prepare them for bright futures. And New York Edge is a leader in afterschool programs.

WHAT WOULD YOU SAY TO SOMEONE CONSIDERING SUPPORTING NEW YORK EDGE FOR THE FIRST TIME?

The staff at New York Edge are committed to providing young people with the tools and skills needed for future success in the classroom and beyond. The work they do each day is truly impacting young people's lives and providing them with opportunities and pathways to a bright future.

At New York Edge, each experience is designed to open doors for young people. Through our programs, students build confidence, discover their strengths, and begin to understand the range of paths available to them. With the support of our donors and community, these opportunities help students see what's possible and how to get there.

Many go on to pursue careers and goals beyond our programs, while others stay connected in meaningful ways—supporting New York Edge through philanthropic gifts, volunteering as

mentors, organizing drives for our food pantries, and showing up for students however they can. They are powerful examples of what it means to give back and of the lasting impact of investing in young people, joining a longstanding community of supporters and helping to carry that commitment forward for the next generation.

In this way, each student's growth becomes part of something larger, strengthening the community that helped them succeed and ensuring the next generation has the same chance to thrive.

WANT TO STAY IN THE LOOP? SIGN UP AT [NEWYORKEDGE.ORG](https://newyorkedge.org)



FORMATIVE, FROM NEW YORK EDGE, IS THE PODCAST WHERE THE LEADERS OF TODAY ARE INTERVIEWED BY THE LEADERS OF TOMORROW! OUR INTREPID CO-HOSTS, ALL BETWEEN THE AGES OF ELEVEN AND FOURTEEN, CONDUCT LONG-FORM INTERVIEWS WITH SUCCESSFUL ADULTS FROM THE WORLDS OF BUSINESS, SCIENCE, THE ARTS, AND BEYOND.

**VISIT
[NEWYORKEDGE.ORG/FORMATIVE](https://newyorkedge.org/formative)
TO CATCH UP ON THE LATEST
EPISODES, OR SCAN THE CODE**



INCOME AND EXPENSES

JULY 1, 2024 TO JUNE 30, 2025



OPERATING ACTIVITIES / SUPPORT AND REVENUE

PUBLIC REVENUE	WITHOUT DONOR RESTRICTIONS	WITH DONOR RESTRICTIONS	TOTAL
The Department of Youth and Community Services	\$ 46,275,408	\$ —	\$ 46,275,408
New York City Department of Education	11,078,881	—	11,078,881
Child Care Stabilization grants	3,103,836	—	3,103,836
ExpandEd	233,160	—	233,160
Other Federal Revenue	250,643	—	250,643
New York State	1,711,840	—	1,711,840
Jacob K. Javits Gifted and Talented Education Program, U.S. Department of Education	799,754	—	799,754
Total Public Revenue	63,453,522	—	63,453,522
PRIVATE CONTRIBUTIONS			
Grants	428,007	568,481	996,488
Individuals	1,180,546	2,046,107	3,226,653
Special events:			
Contributions	975,494	—	975,494
In-Kind revenue	61,700	—	61,700
Other revenue	—	—	—
Less: Costs of direct benefits to donors	(354,416)	—	(354,416)
Special Events, Net	682,778	—	682,778
Total Private Contributions	2,291,331	2,614,588	4,905,919
OTHER REVENUE			
Family Sustained	837,662	—	837,662
Other revenue	1,165	—	1,165
Net assets released from restrictions	232,810	(232,810)	—
Total Other Revenue	1,071,637	(232,810)	838,827
TOTAL SUPPORT AND REVENUE	66,816,490	2,381,778	69,198,268
EXPENSES			
Program	56,422,685	—	56,422,685
Management and General	9,313,934	—	9,313,934
Fundraising	621,160	—	621,160
TOTAL EXPENSES	66,357,779	—	66,357,779
Change in net assets from operating activities	458,711	2,381,778	2,840,489
NON-OPERATING ACTIVITIES			
Investment return, net	145,489	—	145,489
Interest income	51,632	—	51,632
Interest expense	(951,487)	—	(951,487)
Gain on disposals of property and equipment	8,079	—	8,079
Change in net assets from non-operating activities	(746,287)	—	(746,287)
CHANGE IN NET ASSETS	(287,576)	2,381,778	2,094,202
NET ASSETS, BEGINNING OF YEAR	4,411,650	564,945	4,976,595
NET ASSETS, END OF YEAR	\$4,124,074	\$2,946,723	\$7,070,797

DONOR LIST

EVERYTHING WE DO, WE DO TOGETHER. NEW YORK EDGE IS DEEPLY GRATEFUL TO OUR GENEROUS DONORS AND PARTNERS, WHO MAKE POSSIBLE OUR EFFORTS TO SUPPORT OUR CITY'S YOUNG PEOPLE IN REACHING THEIR FULL POTENTIAL. THANK YOU FOR BEING A VITAL PART OF OUR COMMUNITY.

\$100,000 AND ABOVE

Francis Greenburger and Isabelle Autones
 Roger Alcaly and Helen Bodian
 Charles Hayden Foundation
 Niko Elmaleh
 International Youth Foundation
 MacMillan Foundation

\$50,000 - \$99,999

Albanese Organization
 Amazin' Mets Foundation
 Craig Balsam
 Willkie Farr & Gallagher LLP

\$25,000 - \$49,999

Aon
 Cravath, Swaine & Moore LLP
 Gazdick Family Education Fund
 Skip Hartman
 M&T Bank Charitable Foundation
 Kyle Masters
 Quinn Emanuel Urquhart & Sullivan, LLP
 Skadden, Arps, Slate, Meagher & Flom LLP
 Ryan Specialty
 The Walt Disney Company

\$15,000 - \$24,999

Ace Apparel & Promotions
 Bank United
 Chick Fil A Corp
 Louis Ciliberti
 National Grid
 Anita Gupta
 Pascale and Brian Hainline
 M&T Bank
 New York Community Trust
 Gregory Reimers
 USTA

\$10,000 - \$14,999

Peter Lieb and Susan Block-Lieb
 AXIS Capital
 Moira Casey
 Robert Fagenson
 FM Global
 Mike Goldman
 Hakluyt
 CNA Insurance
 Joseph and Sylvia Sfilka Family Foundation
 Robert Kantor
 Lazard Asset Management
 McDermott Will & Schulte
 O'Melveny & Myers LLP
 Jeffrey Ravetz
 The Hyde and Watson Foundation
 Gregoy and Karen Weiss

\$5,000-\$9,999

Adler & Stachenfeld LLP
 David Alcaly
 Paul Anagnostopoulos
 Food Bazaar
 Epic Brokers
 CrossHarbor Capital Partners
 Deloitte
 Durst Organization
 Matthew Sirovich and Meredith Elson
 Corine and Thomas Fitzpatrick
 Niesha and Aaron Foster
 Farrell Fritz
 Barbara and Peter Georgescu
 Stacey Goodman
 Chris Greco
 Anthony Guardino
 Seema Dhar and Neil Gupta
 Jennifer Howard
 Latham & Watkins LLP
 Inigo Limited
 Howard Helene and Carol Mann
 Christopher Reimers
 Harold and Wenche Reinstein
 Ropes & Gray LLP
 Glenn and Mary Rufrano
 Regina Spivey

The Betty E and Chester C Thompson Foundation
 The Jennifer and Jonathan Allen Soros Fund
 Dale Todd

\$2,500-\$4,999.99

ACT
 Heritage Pension Advisors
 Eric Belanich
 Lydia Carlston
 Mats Carlston
 Mark Chertok
 James Coleman
 Jim Coleman
 Monica Davis
 Samantha Rudin Earls
 Gary Saltz Foundation
 Landon Goodman
 Hirschen Singer & Epstein LLP
 John Loeffler
 Marc Mathios
 Steven Milner
 Panera
 Carolyn Perry
 Ross and Alice Sandler
 Adam Spinner
 Scholastic Transportation
 Robert and Amy Tuchman
 Susan Newman and Lew Wyman
 Events by Yudy
 Darren Zeidel

DONORS

\$1,000-\$2,499

Berkenkamp Realty Group, LLC
 Kim Bonanni
 Sydney Brown
 Diane Buchman
 Eileen Buzy
 Monica Chaves
 Salvatore Coco
 Charles Cotسالas
 Jennifer Sica Curry
 Doug Delisle
 Deborah and Orrin Devinsky
 Daniel DiClerico
 Joseph Disa
 Luis Donoso
 KT Elghanayan
 Dennis Flood
 Seth Geiger
 Janet Godwin
 Goldberg Weprin Finkel Goldstein LLP
 Kevin and Jennifer Hauss
 Laura Jean Hawkins
 Tokio Marine HCC
 Cigna Healthcare
 Hearst Corporation
 Frank Hernandez
 Michael Higgins
 James J Houlihan
 John Mincone
 Kari Jonassen
 Scott Kaufman
 Elise Kirban
 Carrie Kyle
 Lambros Lambrou
 LeagueApps
 David Lebenstein
 Lisa Lempel-Sander
 Whitney Magruder
 Lawrence Mandelker
 Francis Marino
 Richard Monopoli
 James Nelson
 Michael T. and Lori Nelson
 Andrea Pane
 Colleen Rein
 Garry Rein
 NYC Service
 Dan Sirota
 Syde Hurdus Foundation
 Paul and Chandler M. Tagliabue
 The Leonard Bernstein Family Foundation
 Bernie Townes
 UHY, LLP
 Orestes Valella
 Oleg Zubarev
\$500-\$999
 Summit Rock Advisors
 Russell Albanese

Zach Alerhand
 Paul Gottsegen and Jane Barnett
 Lisa Bellomo
 Jesse Byrd
 Divine Ladies & Gentlemen
 Nessa Feddis
 Mary Fox
 GameTruck
 Mary Anne Gazdick
 Christie Hausmann
 Steven and Miriam Hyman
 Aneesa Ible
 Harry Kantor
 Tjeert Keijzer
 Anshah Lakhani
 Emily and Gary Mann
 Chad Matthews
 Peter Metis
 JP Morgan
 Lauretta Mulholland
 Richard Negron
 Jim O'Neill
 Alina Peradze
 Matthew Petruła
 Darren Pfeffer
 Bruce Rittenberg
 Robert Gross Architecture LLC
 Karina Van Hoof and Brian Robey
 Jo Ann Secor and Lee Skolnick
 Kelly Sleece
 Patrick Steed
 Susan Swinghamer
 MCM Products USA
 Kent Wu

\$250-\$499

Luke Allen
 John Antonio
 Shannon Baret
 Isabella Barton
 Bernard Bowen
 Erin Frankel and Alvaro Cadahia
 Seth Costen
 Stephanie Costner
 Ali Moshang and Patrick Daly
 Maddy French
 Nessa French
 Melanie Garrido
 Brendan Groarke
 Maria Guida
 Lisa Hakim
 Akil Hawthorne
 Deborah Heiser
 Jacqueline Ebanks
 Dilia Jelen
 Lori Katz
 Paul Katz
 Nick Kingsland

Guardian Life
 David Lulgjuraj
 Maggie Macdobbald
 Vanessa Mandel
 Megan McNamara
 Scott Milner
 Tom and Lisa Murano
 Kevin Reimers
 Shannon Reimers
 Sherry Rosenkrantz
 Jonathan Roth
 Daphany Sanchez
 David Schoenbrod
 Rashid Silvera
 Sean Skelly
 Renee Thekkekara
 Nicole Toch
 Shari and Jon Vegosen

\$100-\$249

Jason A
 Diane and Arthur Abbey
 Merna Abouelmaaty
 Julie Addonizio
 Martha Agosto
 Marilyn Albanese
 Pearl Alfred
 Eric Anderson
 Sean Anderson
 Will Anderson
 Linda Anstendig
 Elizabeth Avallone
 Ellen Baer
 Matt Baer
 Adam Bavifard
 Chloe Brehm
 Isa Brown
 Gwenn Cagann
 Yolanda Campbell
 Cherish Carillo
 Michael Carlinsky
 Oliver Casey
 Joanne Cassidy
 Sabrina Chaaraoui
 Kenneth Cohen
 Arthur Colozzi
 Craig Copeland
 Frances Corrado
 Victor Cosme
 Cristina Sinclair
 Beth Demba
 Lauren D'Angelo
 Timothy Eatman
 Taisha Escribano
 Gill Benedek, Esq.
 American Express
 Theresa Ferguson
 Ilyse Fink
 Michael Fiur
 Nicole Fortsen
 Donna Fredrick
 Kaitlin Friedman
 Gilda Galiano

Matthew Gallo
 Bryon Galvez
 Barbara Garnes
 Mona Genov
 Anna George
 Alanna Guerin
 James Guerin
 Nancy Guida
 Paulina Guida
 Anthony Guidice
 Sant Gupta
 Victoria Hargis
 Todd Harrison
 Molly Hegberg
 Will Heikoff
 Errington Hibbert
 Maryellen Hicks
 Christopher Hill
 Crown Trophy of Forest Hills
 Jeffrey D Himeles
 Will Hussey
 Glenn Jacobowitz
 Adam Jacobs
 Alexander Jacobson
 Jeanne Lutfy & Andy Zlotnick
 Emily Jee
 Eunha Jee
 Krystal Johnson
 Warren Mark Julian
 Ellen Kackmann
 George Kaneris
 Sandra Karczewski
 Elai Katz
 Gary Kauget
 Sarvesh Kaul
 Theresa Kegel
 Lauretta Kennedy
 Andy Kleiman
 Kayako Kobayashi
 Alison Kronstadt
 Christina Ladouceur
 Alec Lakatos
 Andrew and Linda Lattanzi
 Steve Lattanzi
 Irina Lattanzio
 Javier Lattanzio
 Loretta Laurendi
 Ayanna Layne
 Kyle De Leon
 Mary Lesniak
 Carolyn Ligh
 Jin Lim
 Russell Lippman
 Lori Little
 Meghan Fitzpatrick and Jim Lynch
 Griffin Malm
 Margo Manhattan
 Karla Coleman and TaNeattra and Aneattrra Matthewson

Nicholas Mattia
 John McAdams
 Kevin McAlindin
 Grace Mehr
 Michael Melvin
 Tina Metis
 Microsoft
 Dan Mills
 Joanna Mintzer
 Desiree Moore
 Beth Moriarty
 Kaitlyn Moshang
 Joan Murphy
 Sajjan Nagraj
 Deborah Newman
 Heather Nyberg
 John O'Donnell
 Dan Oakes
 Angelo Pedro
 Catherine and Bridget Peterson
 Susan Pliner
 William Pollack
 Bhavina Prashad
 Mariela Q
 Peter Quinones
 Dayanna Quito
 Shana Ratner
 Matthew Rayburn
 Lorna Reimers
 Susan Reisman
 Jonathan Reyes
 Faith Rittenberg
 Janet Robinson
 Ingrid and Ingrid Romero
 Seymour Rosen
 Christopher and Kyle Creegan and Ellen Rosofsky
 Melanie Roy
 Ashley Ruben
 Marianne Rubino
 Elisa Salazar
 Michelle Savarese
 Jean and Raymond V. J. Schrag
 Rhonda Schrock
 Brenda Segel
 Jerri Sherman
 David Shluger
 Zach Shulman
 Anthony Silaco
 Alexander Southwell
 Derick Spaulding
 Patrick Spaulding
 Shane Spaulding
 Regan Steed
 Joseph Stone
 Ralph and Lainey Surette
 Kevin Teng
 Michael Truehart
 James Vacca
 Eizabeth Valella

Kavita Vazirani
 Tai Virgil
 Ben Wang
 Gail Ward
 Jeffrey Wechsler
 Jacqueline Weinberger
 Samuel Weiss
 Ellen and Steve Wilner
 Alexandrae Wint
 Kenneth Wolff
 Irene Yachbes
 Irma Zardoya
 Lillian Zhang
 Lin Zhang

\$99 AND BELOW

Caitlin Abrams
 Albert Agro
 Anita Alexander
 Ashley Alvarado
 Andrea Anderson
 Anheuser-Busch
 Dyana Applebaum
 Diana Arias
 Sean Bajwa
 Emily Baker
 Spark*I Bands
 Megan Basaldua
 Kaitlin Bilby
 Gabriel Birman
 John Bonifant
 Nadira Boodhoo
 Lachell Brantley

Bright Funds, Inc.
 Katrina Brinkley
 Thomas Bronner
 Lizbeth Caceda
 Kelsey Cadahia
 Bedida Campbell
 Beni Campbell
 Chermayne Campbell
 Gerard Campbell
 Mary Choy
 Selena Collado
 Robert Coly
 Hayley Cook
 John Coyne
 Teddy Cranley
 Emma Cunningham
 Marilyn Cunningham
 Patrick Czupryna
 Maria Deiser
 Steven Delianites
 Luigi DiRubba
 Shawna Doherty
 Caitlyn Dovel
 Natalie Dow
 Anthony Durante
 Maya El-Sayed
 Elastic
 Andrew Elcock
 Sheldon Elish
 Stephanie Erjavec
 Maria Evangelista
 Elhadji Fall
 Eman Farahat

Randi Farber
 David Feinberg
 Robert Bryan Fitzgerald
 Roderick Foote
 Abraham Fuchs
 Lorrie Funn
 Angelika Georgostathis
 Elaine Goldman
 Amanda Grayson
 Juhi Gudavalli
 Sarah Hacke
 Tyrone Hanna
 Davis Hausman
 Jonathan Havlicek
 Katey Hayes
 Paula Heaphy
 Elizabeth Held
 Jose and Alejandra Hernandez
 Ollie Holden
 Dana Jabre
 Stuart James
 Jada Johnson
 Jalen Johnson
 Jonathan Johnson
 Jordan Johnson
 Marc and Lois Kemp
 Matt Klassen
 Richard Klassen
 Alice and Gerald Korngold
 Ralph Labianca
 Tony Latsch
 Janell Lewis

Edward Lippert
 Johan Lopez
 Kristina Lozano
 Salvatore Lupo
 Ashkaan Mahjoob
 Caroline Mahoney
 First quality maintenance
 Maya Makinde
 Roxie Marte
 Ian McCarty
 Mike McKenzie
 Mitchell Meade
 Sonya Mehta
 Michael Sinclair
 Laura Nelson
 Henry and Malcah Netzer
 Andrew Olsen
 Victor Olsen
 Ahcene Ouldsaada
 Madina Papadopoulou
 Rachell Parra
 Pfizer
 PwC
 Katie Radvany
 Russell Ransom
 Thomas Reilly
 Kelly Rocchio
 Love Rodriguez
 Peter Roman
 Sarah Rose
 Devin Rosen
 Kira Ross
 Steph Ross

Spencer Rubino-Finn
 Meera Sabeh
 Nick Sakry
 Felix Santana
 Jakob Selzer
 Hilary Shar
 Chelsea Shemesh
 Seth Silberstein
 Marc Silvera
 Jason Singh
 Robert Siniakowicz
 Alaina Smith
 Christoph Somtich
 Cristoph Sontich
 Ceara Sparkl
 Rebecca Stead
 Eudona Stewart
 Sourov Talukder
 Elizabeth Tam
 Joseph Tamborino
 Avery Tandon
 Ashley To
 Latanya Todd-Campbell
 Alexander Tolpin
 Charisse Turner
 Marie Umeh
 Fran Viserto
 Peeranut Visetsuth
 Eric Weiner
 Tamara Wilson
 Kat Yeh

DONORS





58-12 QUEENS BOULEVARD, SUITE 1
WOODSIDE, NY 11377

(718) 786-7110

INFO@NEWYORKEDGE.ORG

NEWYORKEDGE.ORG



@NEW_YORK_EDGE



@NEWYORKEDGE1



@NEW_YORK_EDGE